



EAST AFRICAN COMMUNITY LAKE VICTORIA BASIN COMMISSION



5TH MEETING OF THE GLOBAL NETWORK OF BASINS WORKING ON CLIMATE CHANGE ADAPTATION

**DEVELOPING AND INTEGRATING
TRANSBOUNDARY CLIMATE CHANGE
ADAPTATION INTO BASIN STRATEGIES
AND PLAN: A CASE OF ADAPTING TO
CLIMATE CHANGE IN LAKE VICTORIA
BASIN, FEBRUARY 26TH 2021**

Dr. Ali-Said MATANO
**Executive Secretary, LAKE VICTORIA BASIN
COMMISSION**



DISCUSSION OUTLINE



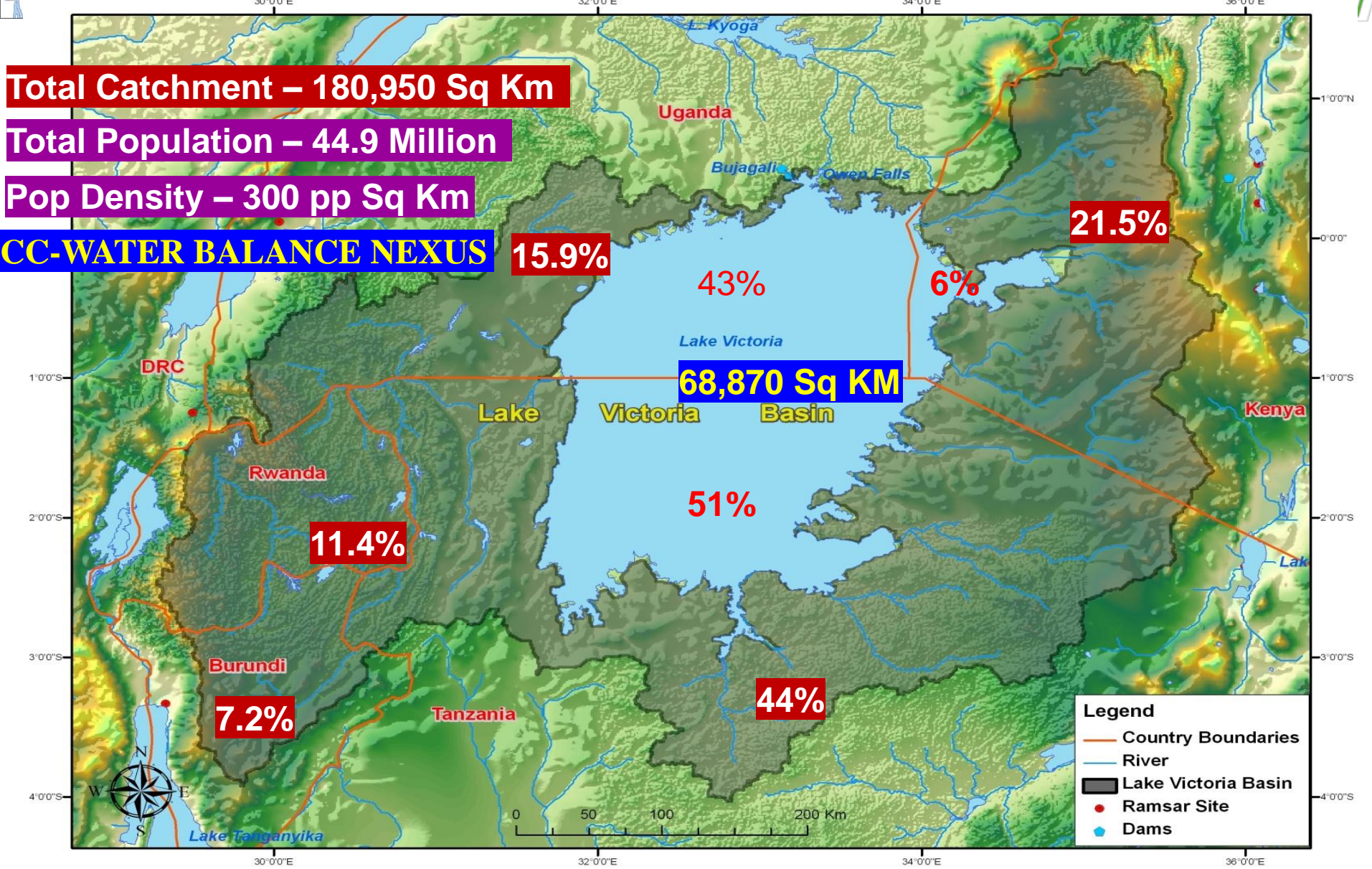
- A. Overview of the Lake Victoria Basin (LVB)
- B. Observed Climate Change Phenomenon in LVB
- C. LVB Climate Change Strategy and Action Plan
- D. Implementation of the Strategy and Action Plan –
Adapting to Climate Change in LVB Project
- E. Conclusion





OVERVIEW OF THE LAKE VICTORIA BASIN



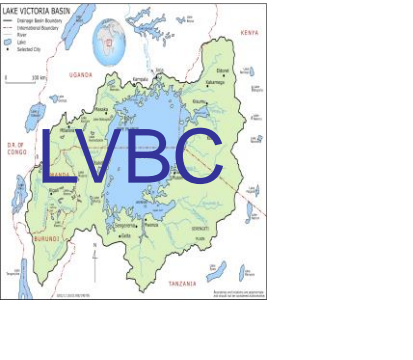


LAKE VICTORIA BASIN

- Drainage Basin Boundary
- - - International Boundary
- River
- Lake
- Selected City



**LVB THE HEADWATERS
OF THE NILE**



❑ Observed climate change in the basin

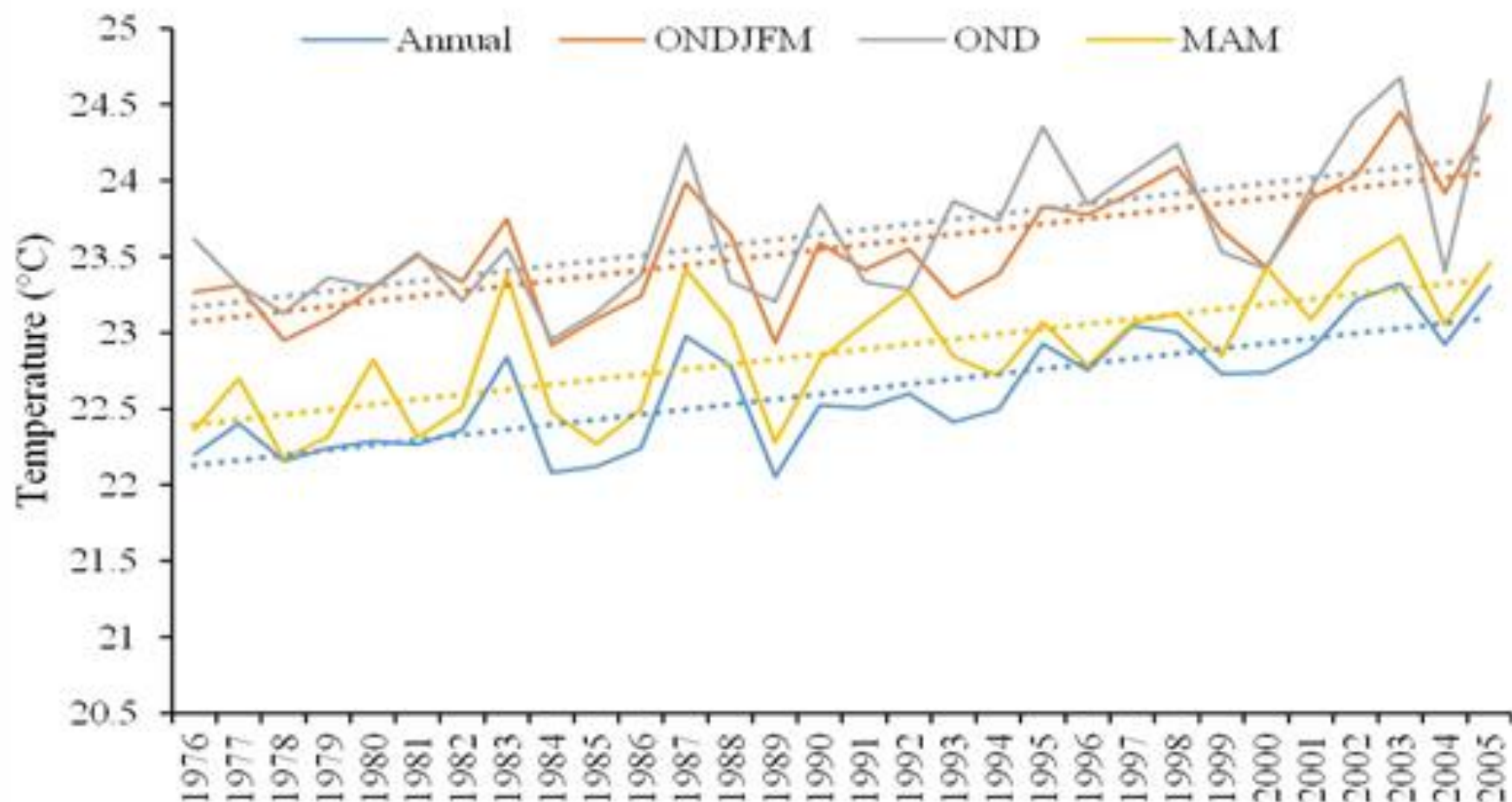
- ✓ Increased variability in rainfall patterns , floods and drought events
- ✓ Mean Annual temperature has increased by approx. 1⁰C between 1950 and 2005

❑ Future climate projections

- ✓ Increased variability in rainfall patterns will continue with annual rainfall generally showing a tendency to increase.
- ✓ By 2100, Mean Annual Temperature is projected to increase by 3–4⁰C.



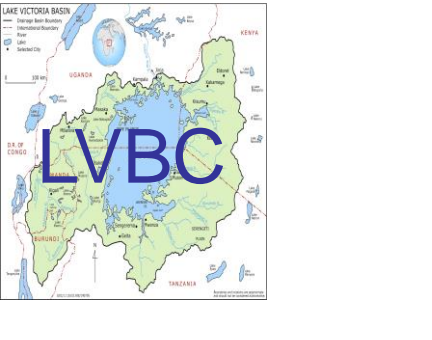
CHANGES IN TEMPERATURES IN LVB [1976 – 2005]



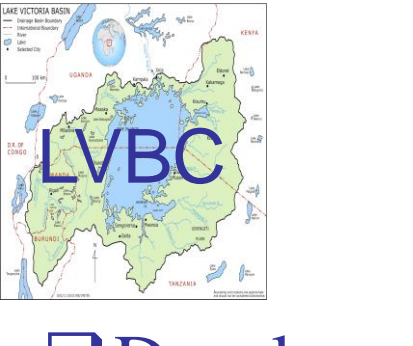
OBSERVED CLIMATE CHANGE IN LVB CONT/....

- ✓ Frequent floods
- ✓ Landslides
- ✓ Droughts
- ✓ Rising and declining water levels in LVB
- ✓ Increased prevalence of diseases e.g. waterborne and malaria





CLIMATE CHANGE ADAPTATION STRATEGY AND ACTION PLAN



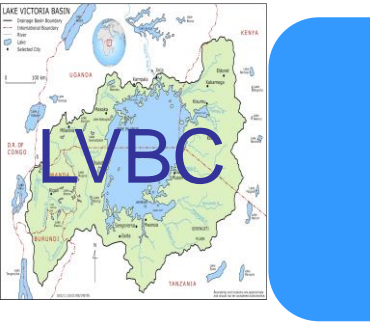
- ☐ Developed in response to observed and future climate change impacts LVB :
- ☐ Presents a comprehensive roadmap for addressing climate change impacts in transboundary LVB
- ☐ Focuses on 5 key sectors
 - agriculture and food security;
 - water and aquatic ecosystems;
 - terrestrial ecosystems;
 - health and human settlements; and
 - energy and infrastructure
- ☐ Provides a range of adaptation options and strategies to address vulnerabilities to the impacts of climate change



IMPLEMENTATION OF THE STRATEGY AND ACTION PLAN



- ❑ LVBC has developed a transboundary regional project to implement the strategy and action plan.
- ❑ The project titled “**Adapting to climate change in Lake Victoria Basin**” is being implemented in 5 Partner States namely: (Brd, Ken, Rw, Tz & Ug)
- ❑ Funded by AF through UN Environment (UNEP) and executed by LVBC
- ❑ The project aims to increase climate resilience in the LVB at both regional, national and local levels.
- ❑ Supports concrete adaptation interventions , pilot both EbA and CbA technologies in selected climate hotspots in the LVB



EXAMPLES OF INTERVENTIONS UNDER THE PROJECT



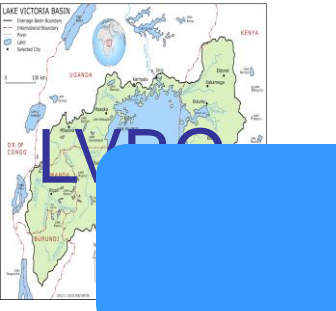
Modern fish drying kilns in Burundi

From



To

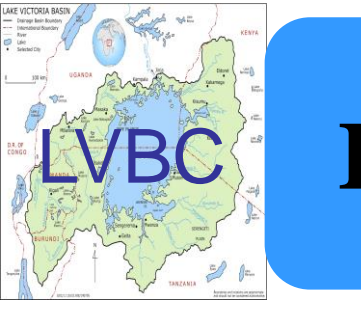




INTERVENTIONS CONT/...

Installed 160 rooftop water harvesting systems and plastered 160 houses in drought prone village of Kirehe District



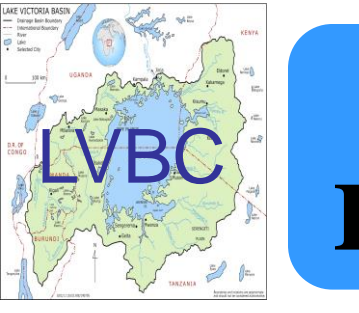


INTERVENTIONS CONT/...



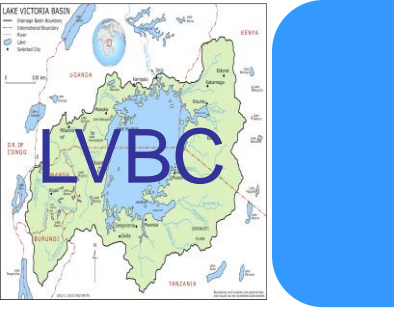
In collaboration with IGAD-ICPAC, trained 30 experts from Partner States on **downscaling regional climate information** to National and Subnational levels





EXAMPLES OF INTERVENTIONS CONT/.....





CONCLUSION



- ❑ Transboundary water cooperation in LVB has:
 - ✓ assisted to improve adaptation to water-related climate risks by sharing data, capacity building, partnerships and awareness creation.
 - ✓ reduced conflict that are catalyzed by climate change related negative impacts (peace); and
 - ✓ contributed to climate resilience among vulnerable communities, sustainable development and most importantly regional integration [EAC is promoting people centered regional integration].



Thank You