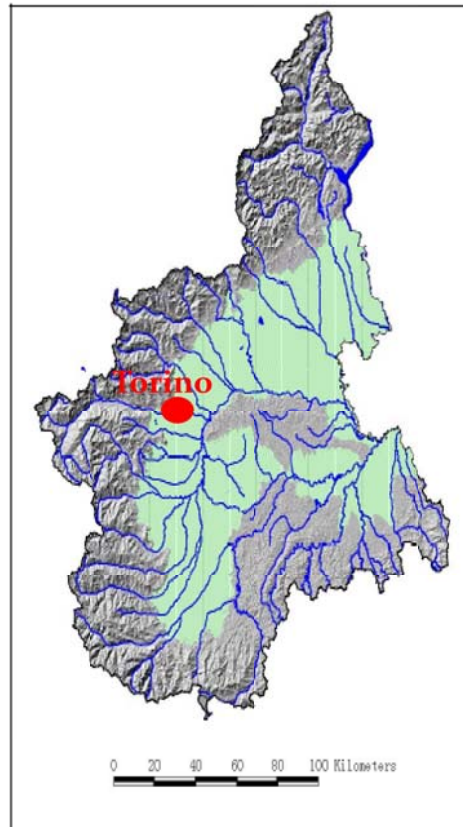


Programme of Measures and Economic Analysis thematic workshop

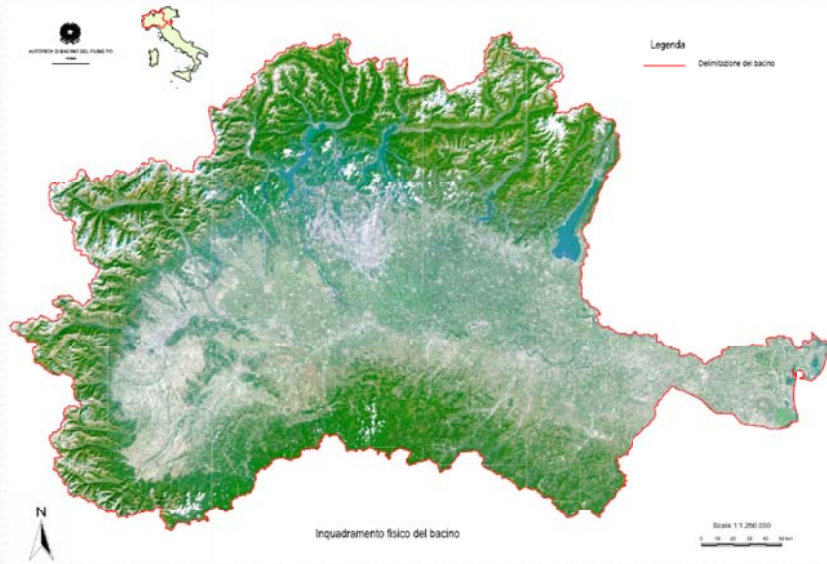
Peer Review Project

18/19 October 2016, Lourdes (France)

Regione Piemonte: a short overview



Po Basin: main characteristics



Po Basin > 74.000 Km²

7 Regions + 1 Autonomous Province
About 16 millions di inhabitants

River Po: the longest in Italy- about 650 Km

- ✓ **average population density: 225 ab/Km²**
- ✓ **35% of national agricultural production**
- ✓ **37% of national industrial production**

- ✓ **RIVERS: 2026 water bodies (1649 natural, 266 artificial, 99 highly modified, 12 of undetermined nature)**
- ✓ **LAKES: 110 lake water bodies (42 natural, 57 highly modified, 11 artificial)**
- ✓ **2 marine coastal water bodies**
- ✓ **147 groundwater bodies (divided between: plain system, superficial aquifers; plain System, deep aquifers, hilly-mountain system).**