

Fourth meeting of the global network of basins working on climate
change adaptation, 5 February 2019

WMO Hydrological activities

WEATHER CLIMATE WATER
TEMPS CLIMAT EAU

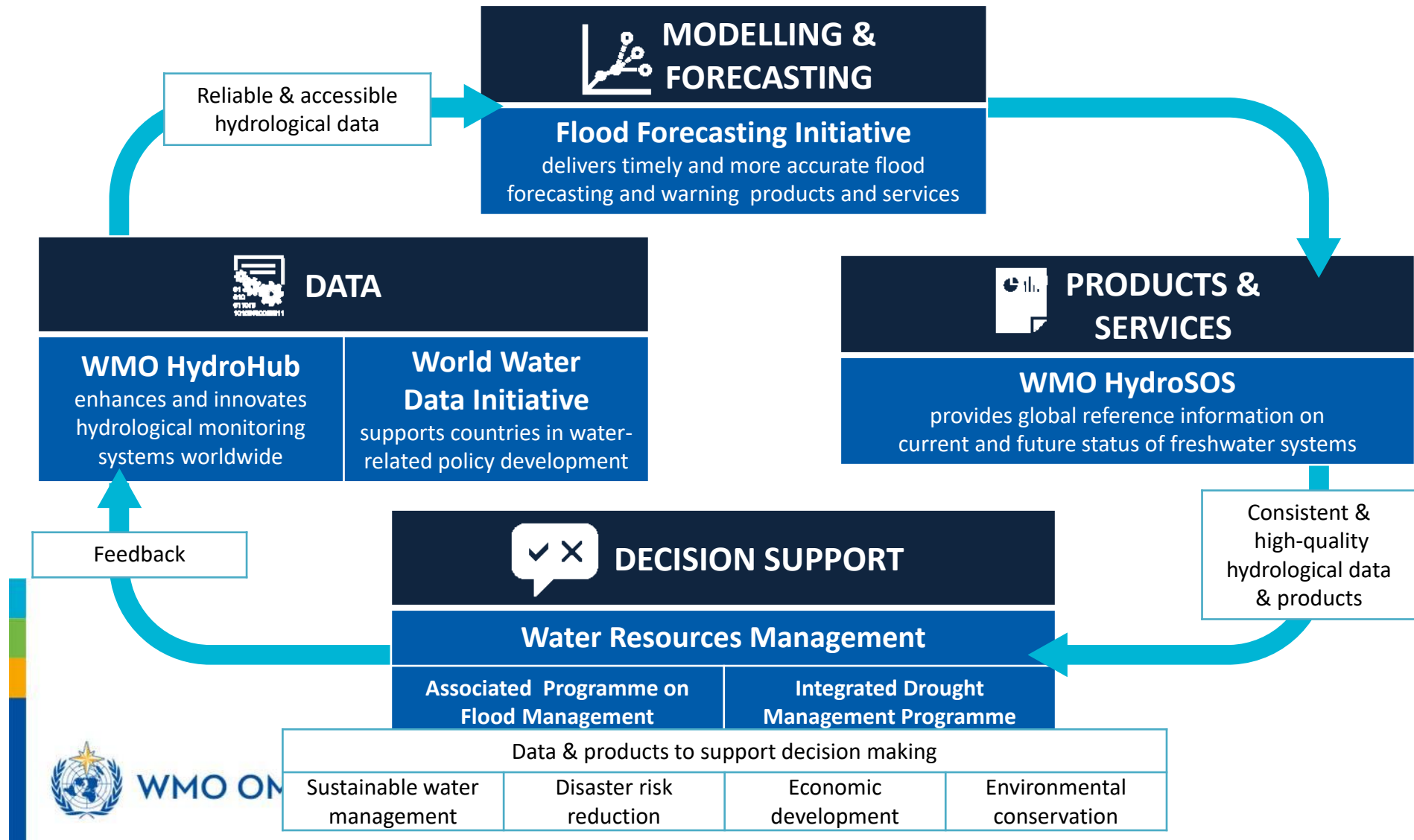


WMO OMM

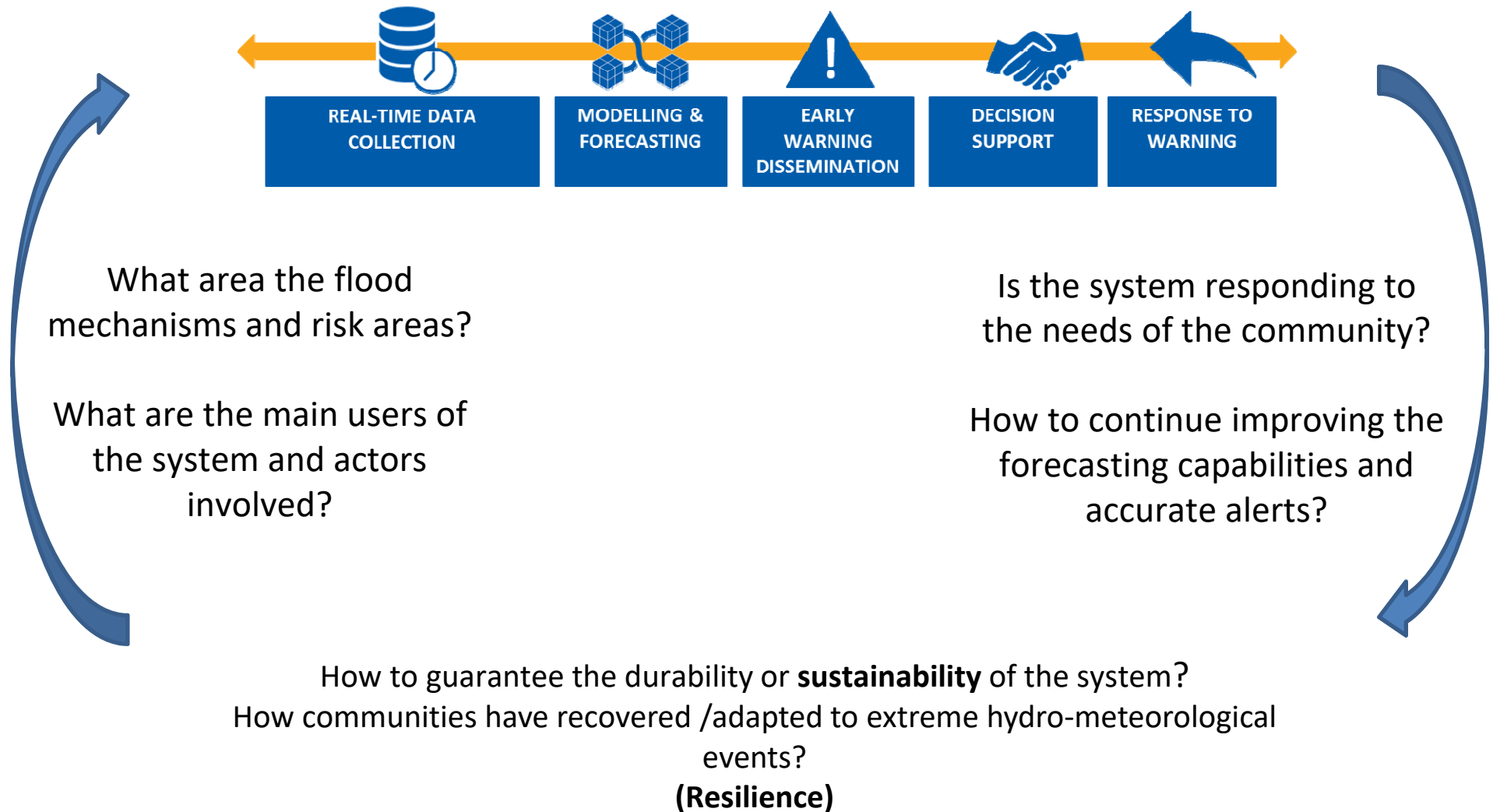
World Meteorological Organization
Organisation météorologique mondiale

The WMO

Hydrological Value Chain Initiatives



E2E - Early Warning System for Flood Forecasting / Multi-Hazard EWS



WMO approach for delivered products for flood forecast

WMO is supporting development of tools, methodologies for E2E EWS for FF which should be:

- ➔ Freely available,
- ➔ Open source,
- ➔ Institutional support,
- ➔ Simplicity,
- ➔

Products delivered should have:

- ✓ technical report addressing the methodology used
- ✓ technical manual documenting the algorithms and data employed
- ✓ guidance to continue the development/update of the methodology
- ✓ software including guidance and detailed comments
- ✓ user guide documenting the installation and use



Joint initiative to improve early warning systems for risks linked to extreme weather events.

This initiative

- Mobilizes resources to implement activities that are already planned (eg: FFGS, CIFDP, etc.)
- It establishes the bases to access funds such as Green Climate Fund and Adaptation Fund



CREWS implementation in selected Countries

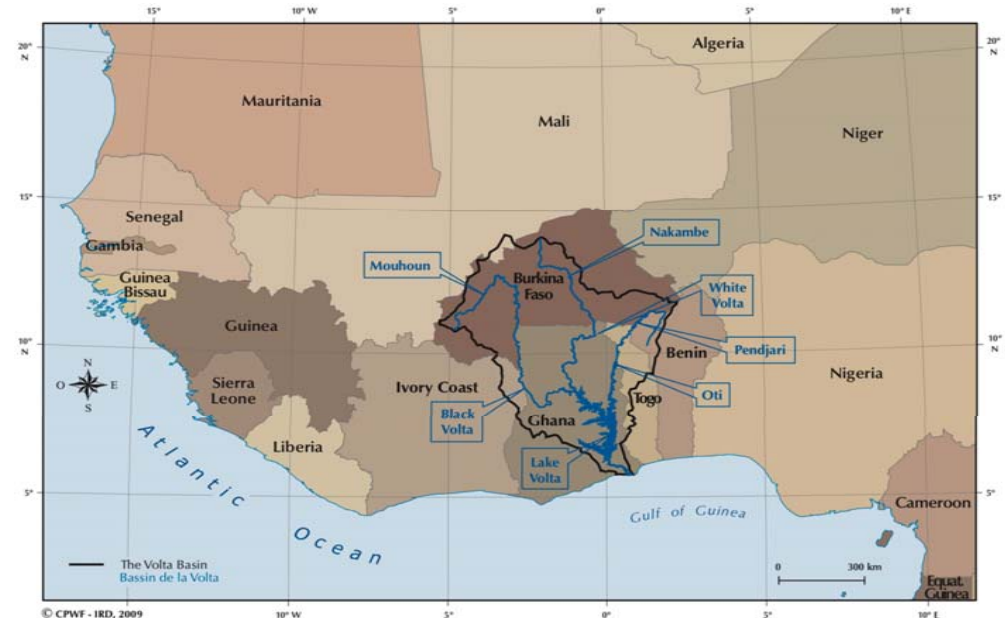
- Burkina Faso: Strengthening national capacities for early warning systems Service Delivery
- West Africa: Seamless operational forecast systems and technical assistance for capacity building , Identifying the conditions and configure an operational EWS for flood forecast
- Mali Hydrological and Meteorological Services Modernization Project
 - Reinforcing the legal and regulatory framework of Mali Météo
 - Implement a long-term and on-demand capacity development and training program for staff



WMO OMM

Integrating Flood and Drought Management and Early Warning for Climate Change Adaptation in the Volta Basin, endorsed by the Adaptation fund

- Regional project: Benin, Burkina Faso, Côte d'Ivoire, Ghana, Mali and Togo
- Focal Area: Disaster risk reduction and early warning systems
- Implementing Entity: WMO
- Executing Entities:
 - World Meteorological Organization
 - Global Water Partnership West Africa (GWP-WAF)
 - Volta Basin Authority (VBA)



- 29 million people
- 400 000 km²
- Semi-arid to sub-humid areas
- 2 millions of people affected by floods over the last 20 years
- 9.7 millions people affected by drought in Burkina Faso over the last 30 years
- Key affected people in agricultural sector and urban areas



WMO OMM



3 components of Volta project

Target thematic areas identified by the six partner countries in their 2014-2016 needs assessments:

Component 1 Risk prevention

- Risk maps
- Climate scenarios
- Ecosystem services
- Long-term risk management strategy

Component 2 Concrete adaptation and stakeholder engagement

- Early Warning System
- Pilot sites
- Nature-based solutions
- Gender mainstreaming

Component 3 Governance

- Strengthening resilience
- Capacity building of policy-makers
- Local collaboration

Project concept note: [click here](#)

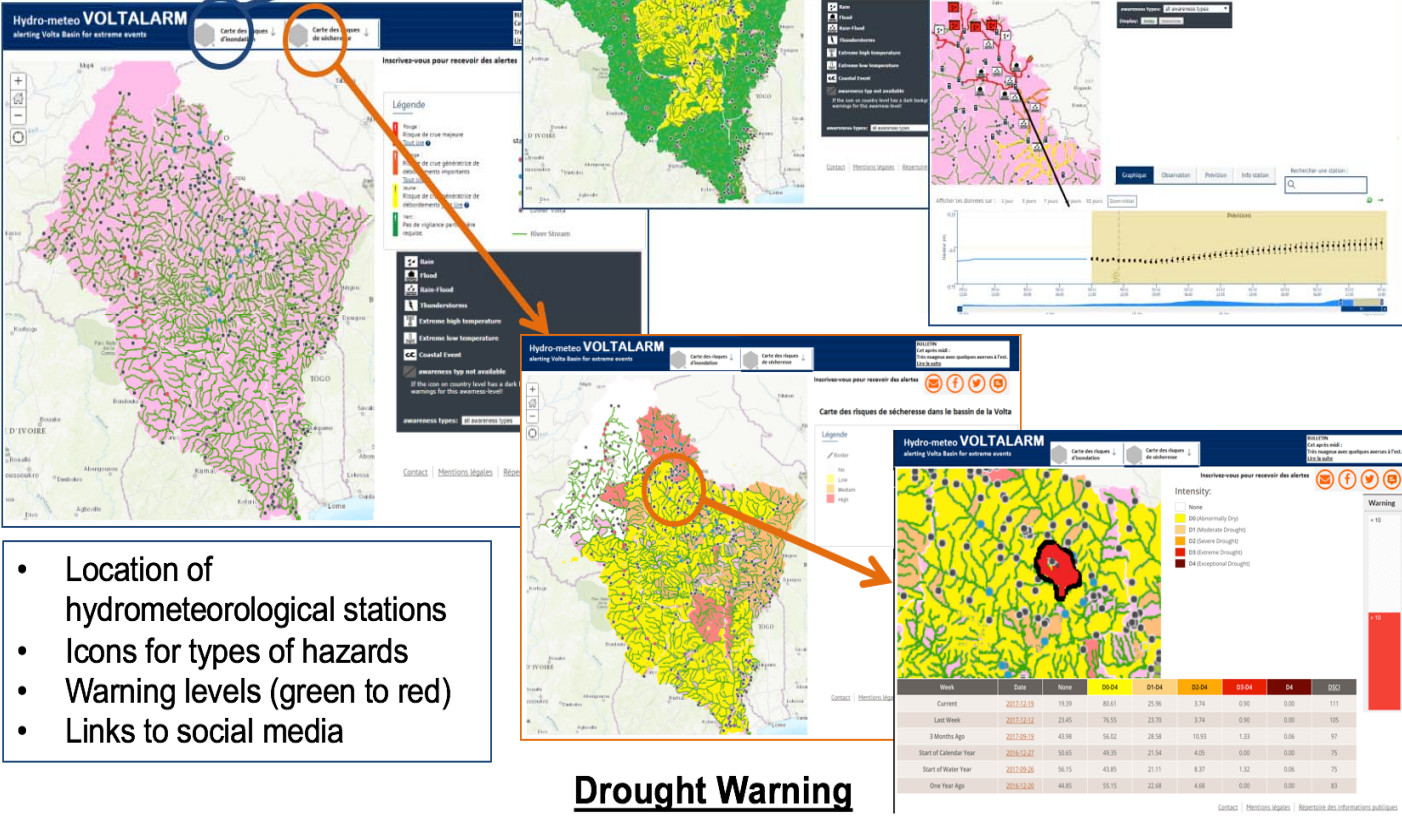
Project Proposal : [click here](#)

Web-based Early Warning System

Sub-basin Flood Warning

River Warning and forecasts

Volta Basin level

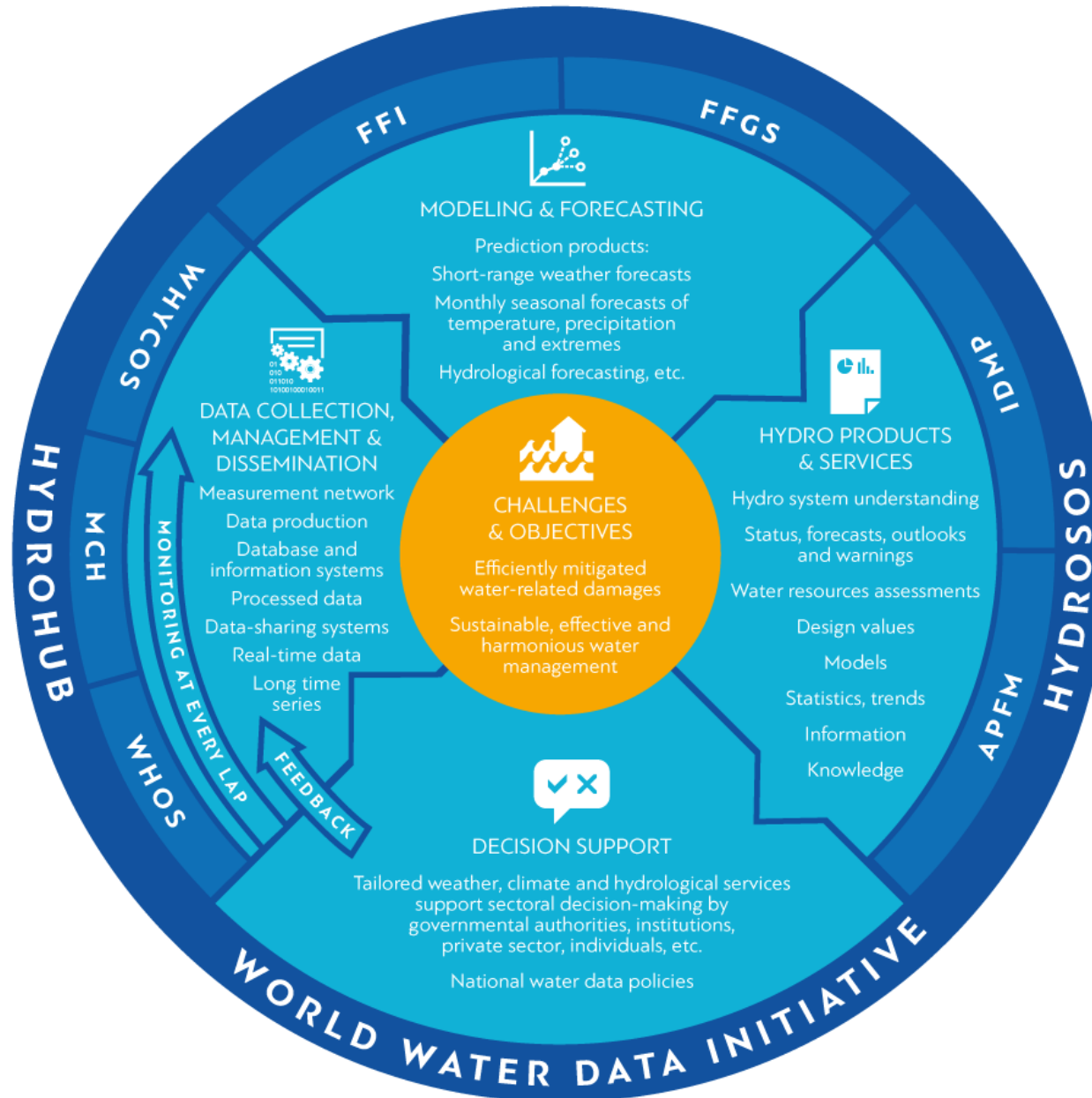


Drought Warning

Drought Monitor and Outlook



Conclusion: WMO as a efficient, technical Partner



WMO OMM

Thank you Merci



WMO OMM

World Meteorological Organization
Organisation météorologique mondiale